

ASFALIS EX8.1



ASFALIS EX8.1

Begleitheft zur Version

# Inhaltsverzeichnis

<b>1.</b>	<b><u>NEU IN DIESEM RELEASE</u></b>	<b>3</b>
1.1	CAD SUPPORT	3
1.2	NEUES MODULS „DATA PACKAGE STUDIO“	4
1.3	NEUES MODUL „SCENARIO CREATOR“	5
1.4	ERWEITERUNG DER EXPORTMÖGLICHKEIT FÜR DAS MODUL PDQ CHECKER	5
1.5	CAD VALIDATOR (GEOMETRIEVERGLEICH) ERWEITERUNG/VERBESSERUNGEN	6
1.6	ASFALIS SMARTLAUNCHER (ASL)	7
<b>2.</b>	<b><u>INSTALLATION</u></b>	<b>8</b>
2.1	ASFALIS UPDATEINSTALLATION	8
2.2	ASFALIS NEUINSTALLATION	8
2.3	LIZENZSERVER	8
2.3.1	LIZENZANFORDERUNG	8
2.3.2	LIZENZVERWALTUNG / LIZENZEINGABE	9
<b>3.</b>	<b><u>ANMERKUNGEN (ENGL.)</u></b>	<b>11</b>
<b>4.</b>	<b><u>PRODUKTERWEITERUNGEN / BEHOBENE FEHLER</u></b>	<b>13</b>
<b>5.</b>	<b><u>BEKANNTE FEHLER</u></b>	<b>16</b>
<b>6.</b>	<b><u>BESCHRÄNKUNGEN VON „NEW ADAPTER“-EINSTELLUNG</u></b>	<b>19</b>
<b>7.</b>	<b><u>NOTIZEN</u></b>	<b>19</b>
<b>8.</b>	<b><u>SYSTEMVORAUSSETZUNGEN</u></b>	<b>21</b>

Wir freuen uns, Ihnen die neue Version EX 8.1 von ASFALIS zur Verfügung stellen zu können. Bei der Installation stehen wir Ihnen im Rahmen Ihres Wartungsvertrages gerne zur Seite.

Dies ist ein Zwischenrelease mit Schnittstellen- und Funktionsupdates sowie Bugfixes.

**Achtung, für dieses Release muss der Lizenzdienst auf Sentinel RMS Version 9.2 geupdated werden.**

Unter [LicenseServer] im Installationsmedium finden Sie den Ordner [1\_Install]. Verwenden Sie Sentinel RMS älter als 9.2, so aktualisieren Sie den Lizenzserver (-dienst) mittels setup.exe. Es ist nicht notwendig, die Lizenz erneut einzuspielen.

Wir bitten die Hinweise in diesem Dokument zu beachten, um die Umstellung reibungslos zu gestalten.

### **Schnelleinstieg für erfahrene Benutzer:**

- Aktualisieren Sie den Lizenzserver (-dienst) auf Sentinel RMS Version 9.2. Installer im Ordner */LicenseServer/1\_Install*
- Nutzen Sie ASFALIS mit ELYBATCH, so könnte die Konfiguration eines bestehenden ASFALIS EX8.x weiterhin verwendet werden. Um den Ist-Stand zu behalten, müssen einige mitgelieferte C++ Runtimes installiert werden (vcredist), ansonsten reicht (für ein mit elybatch.exe betriebenes ASFALIS) das gewohnte Überkopieren des EX 8.1 */bin* Ordners aus. Wir empfehlen die Installation aller vcredist\* aus dem Ordner */Support/Runtime* des Installationsmediums.
- Nutzen Sie ASFALIS mit Slavenodes oder TransServer, so sollte Kontakt mit unserem Support aufgenommen werden, um die Alteinstellungen erhalten zu können.

## **1. Neu in diesem Release**

### **1.1 CAD Support**

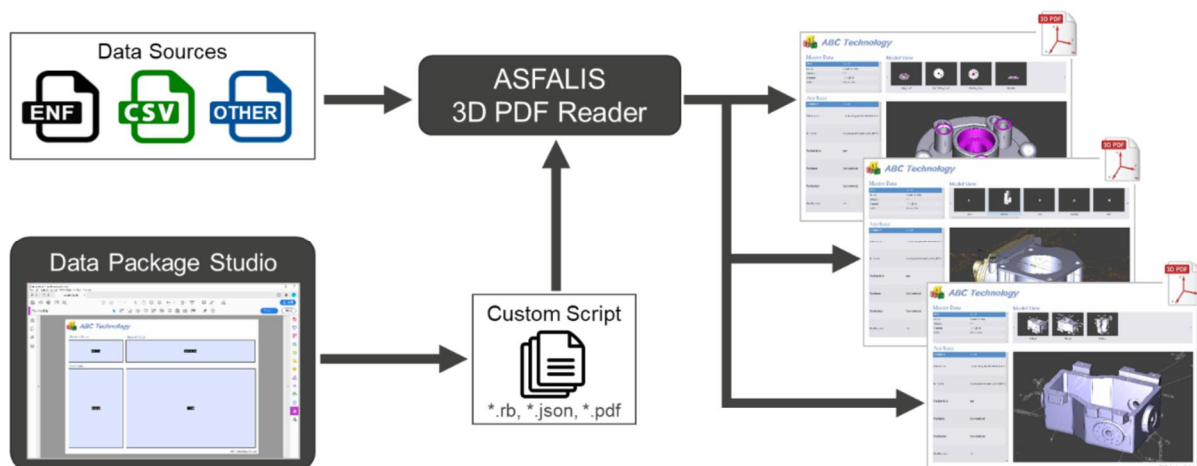
Inklusive der neuen Formate unterstützt ASFALIS nun:

- CATIA V5 V5 R19 - R28
  - CATIA V4.2.1 - V4.2.5
  - NX I-DEAS 6.3 , 6.4 , 6.5 , 6.6
  - Creo Parametric 2.0 - 5.0
  - Parasolid V7 – V31.0
  - NX 8.5 - 12
  - SolidWorks 2015 - 2019
  - Inventor 2017 - 2019
  - Creo Elements/Direct Modeling 18.1 , 19.0 , 20.0 , 20.1
  - IGES 5.2, 5.3
  - STEP AP203, 214, 242
  - STEP AP242 BOM
  - ACIS R6-R28
  - JT 6.4 – 10.2 (Import), JT 8.0 – 10.2 (Export)
  - PLM XML
- 
- CATIA V5 standalone R7 - R28 (Import), R14 , R19, R20 (Export)
  - Creo Parametric standalone 2000i - WF5, CP1.0 – CP4.0 (Import)
  - NX standalone UG10 - NX12 (Import)

- STL (Export)
- XVL v3 , v5 , v7 , v9 , v10 , v11 (Export)
- 3D PDF

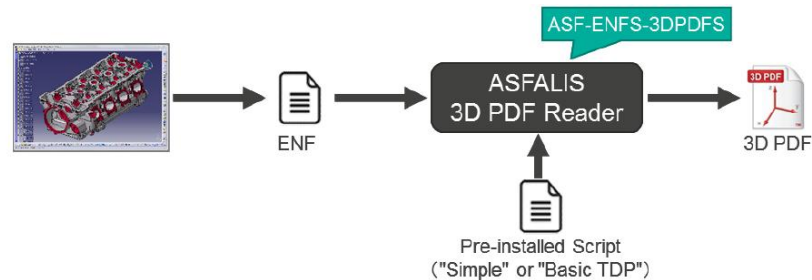
## 1.2 Neues Modul „Data Package Studio“

Es gibt ein neues Modul, welches die Erstellung und Bearbeitung der 3D-PDF Vorlagen für die Schnittstelle ENF nach 3D PDF ermöglicht. Data Package Studio ist in dem Modul „3D PDF Editor“ enthalten. Das neue Modul ist ein Plug-in für den Adobe Acrobat Pro DC. Der Adobe Acrobat Pro DC ist nicht Bestandteil des Moduls und muss gesondert Beschafft werden.

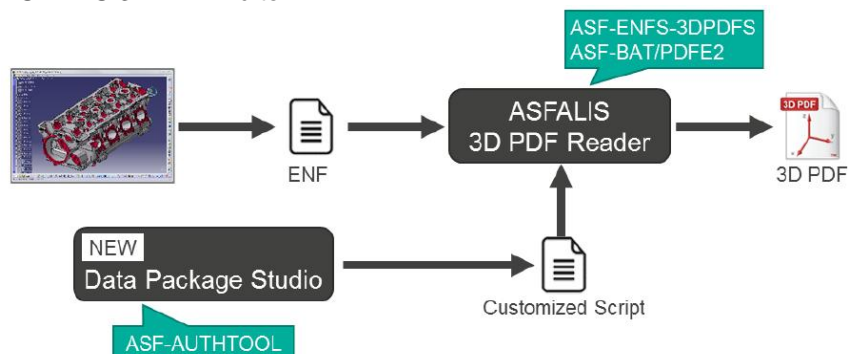


Welche Module werden für welchen Anwendungsfall benötigt?

- Fall 1: Standartvorlage verwenden
  - o ASFALIS ENF nach 3D PDF

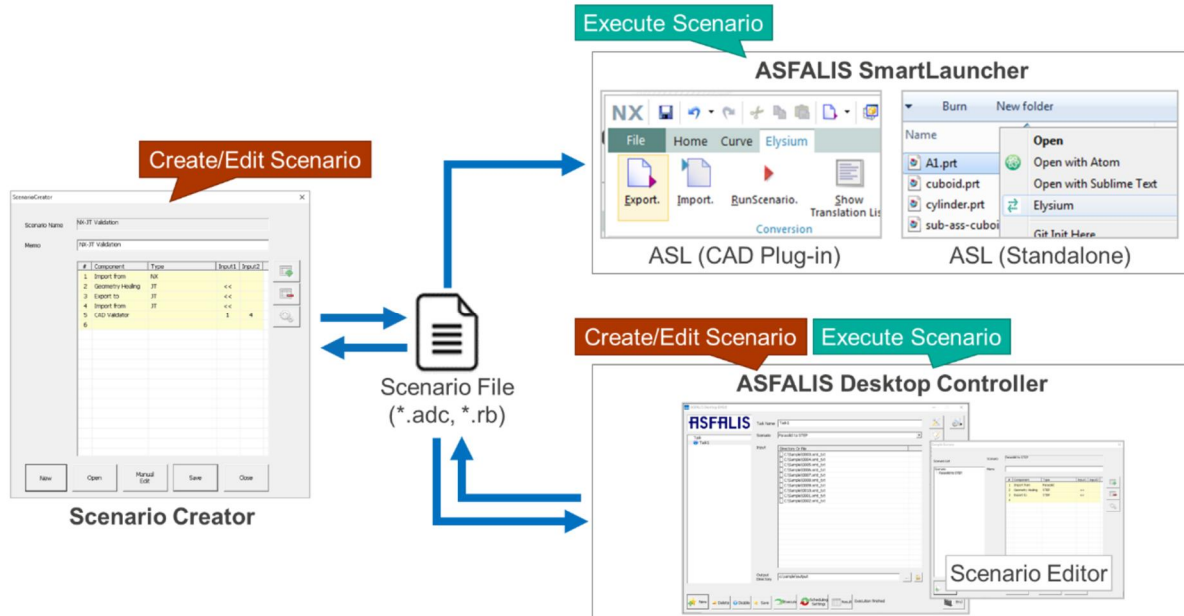


- Fall 2: Benutzerdefinierte Vorlage verwenden
  - o ASFALIS ENF nach 3D PDF
  - o ASFALIS 3D PDF Editor



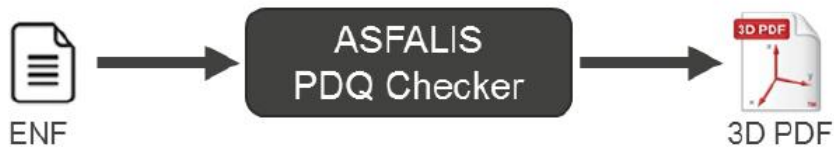
### 1.3 Neues Modul „Scenario Creator“

Es gibt ein neues Modul, welches die Erstellung und Bearbeitung der Szenarien für den ASFALIS SmartLauncher (ASL) und den ASFALIS Desktop Controller (ADC) vereinfacht. Für den Scenario Creator wird keine zusätzliche Lizenz benötigt.



### 1.4 Erweiterung der Exportmöglichkeit für das Modul PDQ Checker

Das Ergebnis des Moduls PDQ Checker kann jetzt auch als 3D PDF exportiert werden. Die Lizenz für ASFALIS ENF nach 3D PDF ist dafür erforderlich

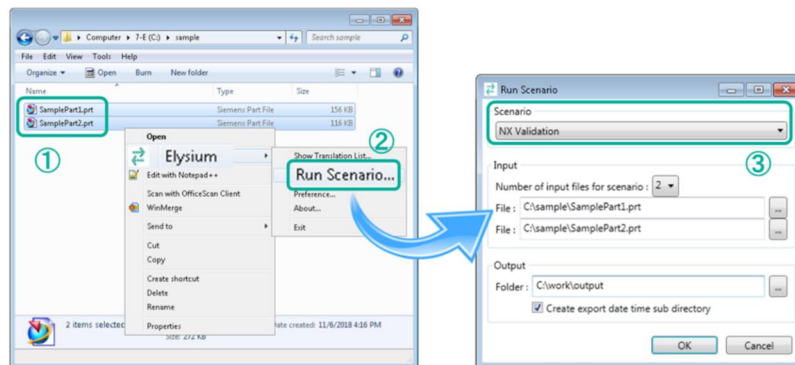


## 1.5 CAD Validator (Geometrievergleich) Erweiterung/Verbesserungen

- Allgemein
  - o Verbesserung der Vergleichsergebnisse zwischen exakter Geometrie (B-rep) und tessellierter Geometrie (Polygone)
    - § Es werden auch Bidirektional Unterschiede erkannt
    - § Unterstützung für Polylinien und Polygonpunkte hinzugefügt
  - o Grafischer PMI Vergleich hinzugefügt
  - o Unterstützung für den Vergleich von mehrstufigen Schnitten wurde hinzugefügt. (z.B. zwei parallele Ebenen und Ausschnitt)
  - o Unterstützung für den Schraffurmustervergleich hinzugefügt
- 3D HTML Report
  - o Neue Browserfunktionen hinzugefügt
    - § Es wurde eine Option hinzugefügt, um das Ein-/Ausblenden von unsichtbaren Instanzen zu aktivieren.
    - § Es wurde eine Option zum Ein-/Ausschalten der Synchronisation der linken und rechten 3D-Ansicht hinzugefügt.
    - § Ermöglicht die automatische Anpassung der PMI-Ansichtsrichtung. (Wendefunktion)
  - o Das Layout der Seite[Baugruppe] wurde verbessert und um neue Funktionen erweitert.
    - § Verbesserte Sichtbarkeit der Validierungsergebnisse der Baugruppenstruktur.
    - § Aktiviert, um zwischen[Alle anzeigen] und[Nur Differenzmodus] zu wechseln.
    - § Es wurde eine Filterfunktion hinzugefügt, um das Ein-/Ausblenden jedes Validierungselements zu aktivieren.
    - § Eine Sortierfunktion für den Baugruppenbaum wurde hinzugefügt.
    - § Es wurde eine Option zum Ein-/Ausschalten der Synchronisation von linken und rechten Baugruppenbäumen hinzugefügt.
    - § Verbessert, um die Auswahl eines Teils in der 3D-Ansicht mit derjenigen im Baugruppenbaum zu verknüpfen.
  - o Verbesserungen der Seite [Details]
    - § Es wurde eine Schaltfläche hinzugefügt, um das Aus- und Einklappen der einzelnen Elemente zu ändern.
    - § Erweitert, um die Auswahl einer Instanz auf der Detailliste mit der 3D-Ansicht zu verbinden.
    - § Es wurde eine Filterfunktion hinzugefügt, um das Ein-/Ausblenden jedes Validierungselements zu aktivieren.
  - o Reiter [Informationen] verbessert
    - § CAD-System Version hinzugefügt (für die Konvertierung von CAD nach ENF)
- 3D PDF Report
  - o Performance Verbesserungen bei der Anzeige von Geometrieunterschieden
  - o Reduzierung des Speicherverbrauchs beim Öffnen von 3D PDF Report Daten
  - o Reiter [Informationen] verbessert
    - § CAD-System Version hinzugefügt (für die Konvertierung von CAD nach ENF)

## 1.6 ASFALIS SmartLauncher (ASL)

- Option hinzugefügt um ein Szenario zu verwenden welches 2 Importdateien benötigt



1. Zwei Dateien im Windows Explorer auswählen
2. Aus dem Kontextmenu [Run Scenario] auswähltes
3. Szenario auswählen

- ASL für CATIA V5 Plug-in: Unterstützung für „on-memory“ Konvertierung hinzugefügt
- ASL für NX Plug-in: Unterstützung für „on-memory“ Konvertierung hinzugefügt
- ASL für Creo Parametric Plug-in: Unterstützung für die Konvertierung von Creo-Daten aus Windchill

## 2. Installation

### 2.1 ASFALIS Updateinstallation

Der Wechsel auf die Komponenten von ASFALIS EX 8.0 geschieht beim Betrieb per XML-Szenarios und Aufruf durch `elybatch.exe` durch bloßes Überkopieren der neuen Komponenten in Ihr ASFALIS `/bin`-Verzeichnis.

Ihr derzeitiger Ist-Stand bleibt erhalten und funktioniert auch mit EX 8.0

Wir empfehlen die Installation aller `vcredist*` aus dem Ordner `/Support/Runtime` des Installationsmediums.

Wir stehen Ihnen hier im Rahmen Ihres Wartungsvertrages mit Rat und Tat zur Seite.



Bitte kopieren Sie die neuen EX8.0 Module in Ihr existierendes ASFALIS `/bin` – Verzeichnis. Installieren Sie alle `vcredist*` aus dem Ordner `/Support/Runtime`

Der Ordner `/Doc` des Installationsmediums enthält die Datei `Requirement_ENG.pdf`. Bitte beachten Sie die dortigen Informationen.

### 2.2 ASFALIS Neuinstallation

ASFALIS-Installationen sind meist nutzerspezifisch und schwer zu verallgemeinern. Neuinstallationen werden i.d.R. durch unseren Support durchgeführt, deshalb erfolgt hier keine gesonderte Beschreibung.

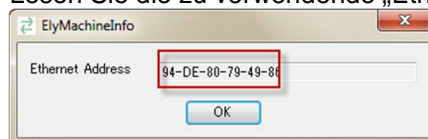
### 2.3 Lizenzserver

#### 2.3.1 Lizenzanforderung

Zum Betrieb von EX 8.0 ist eine Lizenz erforderlich.  
(Sie müssen die Lizenz für EX8 explizit bei CAMTEX anfordern, selbst wenn Sie schon eine lauffähige EX7x-Lizenz haben.)

Es wird eine bestimmte MAC-Adresse Ihrer Netzwerkkarte verwendet. Ermitteln Sie bitte die Elysium HostID des Lizenzservers ausschließlich wie folgt:

- a. Unter [LicenseServer] im Installationsmedium finden Sie den Ordner [2\_HostID].  
Starten Sie die Datei **elymacinfo.exe** (Es erfolgt keine Installation)
- b. Lesen Sie die zu verwendende „Ethernet Address“ ab.



- c. Senden Sie uns Ihre Lizenzanforderung zusammen mit dieser „Ethernet Address“.



## 2.3.2 Lizenzverwaltung / Lizenzeingabe

Nach Erhalt Ihrer Lizenzanforderung wird Ihre Lizenz ausgestellt und Ihnen per email übersandt. Lizenzdateien haben die Endung **\*.elylic**.

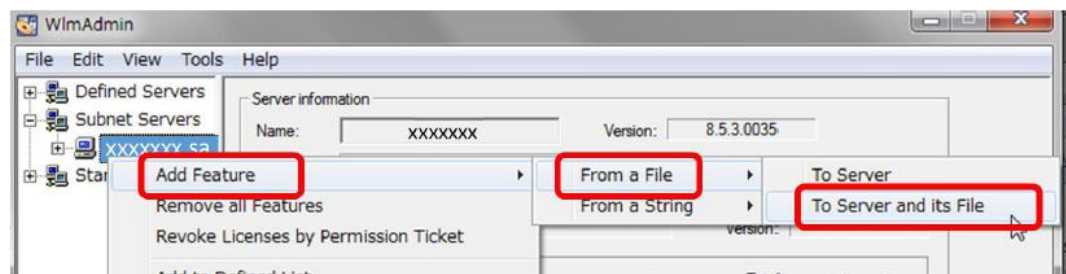
Zur Verwaltung des installierten Lizenzservers benötigen Sie die Daten aus dem Ordner [3\_Administration] Ihres Installationsmediums.

Am besten kopieren Sie sich den kompletten Ordner nach z.B.  
**c:\elysium\licenseserver\3\_Administration**

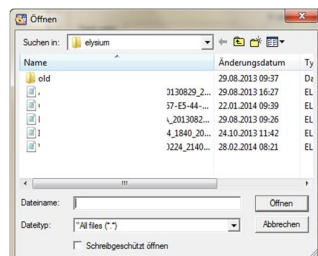
Starten Sie die Datei **WlmAdmin.exe** aus dem Ordner [3\_Administration].  
Sie brauchen hierzu Administratorrechte.

Klicken Sie auf der linken Seite den Punkt „Subnet Servers“ auf. Der Name Ihres Lizenzservers sollte zu sehen sein.

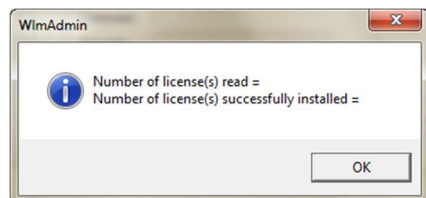
Markieren Sie Ihren Lizenzserver und klicken Sie mit der rechten Maustaste darauf.



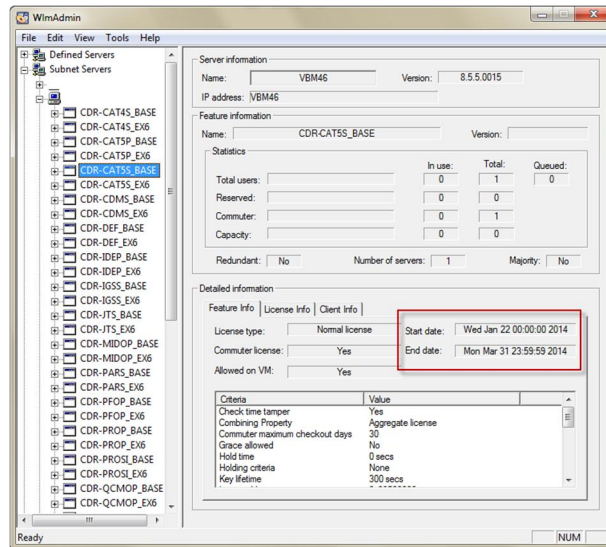
Wählen Sie [Add Feature] – [From a File] – [To Server and its File]



Verweisen Sie im [Öffnen] Dialog zur erhaltenen Lizenzdatei **\*.elylic**.  
-> Die Datei \*.elylic kann an einem beliebigen Ort liegen. Sie wird nur ausgelesen.



Ihre Lizenz wurde erfolgreich importiert.



Sie können unterhalb Ihres Rechnernamens nun die erteilten Lizenzen einsehen und z.B. das Ablaufdatum auslesen.

Die Lizenzierung ist hiermit abgeschlossen.



**Tipp für Admins:**

Die Lizenzverwaltung mit *[wlmadmin.exe]* nach 2.3.2 kann auch von einem entfernten Rechner über das Netzwerk ausgeführt werden.

### 3. Anmerkungen (engl.)

#### (1) STEP ENF Writer

- Improved PMI translation from STEP AP242 to ENF.
- Enabled to translate the Symbol in Dimension.
- Enabled to translate the projection type of Saved Views.
- Enabled to translate layers and display flags.
- Enabled to translate units of GDT and Datum Target.
- Enabled to translate the number of decimal places of Dimension and Tolerance.
- Improved the translation of PMI application zone. (e.g., Added support of type "All Over")
- Improved the translation of PMI related elements.
- Added support of GVP(Geometry Validation Properties) of each volume in STEP AP242 to ENF translation.
- Added support of AP242 TC schema in STEP AP242 BOM XML to ENF translation.

#### (2) STEP ENF Reader

- Improved PMI translation from ENF to STEP AP242.
- Added support of semantic PMI translation. (Dimension, Geometric Tolerance, Datum, Datum Target, Note)
- Enabled to translate single-plane sections.
- Enabled to translate layers and display flags.
- Enabled to translate units of GDT and Datum Target.
- Enabled to translate the number of decimal places of Dimension and Tolerance.
- Improved the translation of PMI application zone. (e.g., Added support of type "All Over")
- Enhanced to translate a capture of CATIA V5 with neither view direction nor view to Saved View.
- Improved VP(Validation Properties) translation from ENF to STEP AP242.
- Enabled to translate Extended Validation Properties.
- Enabled to translate PMI Validation Properties of semantic PMI.
- Enabled to translate GVP(Geometry Validation Properties) of each volume
- Added support of AP242 TC schema in ENF to STEP AP242 BOM XML translation.

#### (3) Geometry Simplifier

- Enhanced the function to replace with simple shape.
- Enhanced the function of cylinder replacement to make it possible to replace original geometry with hole with tube not with cylinder.
- Enhanced the Envelop Solid function.
  - Added a new parameter "EnvelopEnableFailSafe" to the sub process "EnvelopSolid" to prevent from producing non-manifold edges and free edges.
  - Added a new parameter "TargetOnlyVisibleElem" to the sub process "EnvelopSolid" to narrow down the target to visible elements.
  - Enhanced the function to remove all holes and grooves.
  - Added a new parameter "NonTargetFaceUserAttrKey" to the sub process "RemoveAllHoleGrooveProtrusion" to specify faces which should be kept after removal of holes and grooves.
  - Added a new parameter "HoleMaxDiameter" to the sub process "RemoveAllHoleGrooveProtrusion" to specify the max length of diameter which should be removed.
  - Enhanced the function to remove slots and logos.
- Added the following parameters to the sub process "RemoveSlot" and "RemoveLogo" to specify the target and non-target of removal.
- TargetFaceColor
  - TargetFaceUserAttrKey
  - TargetPartUserAttrKey
  - NonTargetFaceColor
  - NonTargetFaceUserAttrKey
  - NonTargetPartUserAttrKey
- Enhanced the function to remove invisible volumes.

Added the following parameters to the sub process "RemoveInvisiblePart" to specify the target and non-target of removal.

- TargetPartUserAttrKey
- NonTargetPartUserAttrKey
- Enhanced the function to extract visible elements.

Enhanced the parameter "EnvelopHiddenInnerElements" of the sub process "ExtractVisibleFace" and enabled to add specific user attributes to visible/invisible faces.

- Added new sub process "ExportENF"

Enabled to export the result of each sub process as ENF by inserting the sub process "ExportENF" between each simplification sub process.

(4) Added Support for the Latest CAD Versions

- SOLIDWORKS ENF Writer/Reader

Added support of SOLIDWORKS 2019

[Supported versions: SOLIDWORKS 2015 - 2019]

- Parasolid ENF Writer/Reader

Added support of V31.0

[Supported versions: V7 – V31.0]

(5) Others

- Upgraded the license server to Sentinel RMS License Manager v9.2.1

v9.2.1 supports Windows Server 2016. ASFALIS EX8.1 is available with v9.1 or later but Elysium recommends an upgrade to v9.2.1.

Please refer to "Sentinel RMS License Manager - Setup & Quick Start Guide" included in the installer of license server.

## 4. Produkterweiterungen / Behobene Fehler

The IDs in the brackets shows the relevant Elysium support ID.

(1) Common for all ENF Writers

- Improved PMI translation
- Improved the translation of PMI application zone. (e.g., Added support of type "All Over")
- \* Available for CATIA V5(Plug-in), NX(Plug-in), Creo Parametric(Plug-in), SOLIDWORKS, STEP, JT
- Enhanced the visibility of PMI by identifying graphic information originating from text.
- \* Available for CATIA V5(Plug-in), NX(Plug-in), SOLIDWORKS, JT
- Enhanced to translate multi-plane sections. (e.g., two parallel-plane type and box type)
- \* Available for NX(Plug-in), JT
- \* Available for NX11 or later
- Enhanced to translate the hatching pattern on the section plane.
- \* Available for NX(Plug-in), JT
- Enhanced to translate the property of the section plane. (e.g., presence of cap/section curve and color)
- \* Available for NX(Plug-in), JT

(2) Common for all ENF Readers

- Improved PMI translation
- Improved the translation of PMI application zone. (e.g., Added support of type "All Over")
- \* Available for CATIA V5(Plug-in), NX(Plug-in), STEP, JT
- Enhanced to translate multi-plane sections. (e.g., two parallel-plane type and box type)
- \* Available for NX(Plug-in), JT
- \* Available for NX11 or later
- Enhanced to translate the property of the section plane. (e.g., presence of cap/section curve and color)
- \* Available for NX(Plug-in), JT

(3) CATIA V5(Plug-in) ENF Writer

- Improved PMI translation
- Improved the translation of the semantic information of dimension, "Tolerance Representation". (00042276)
- Improved the translation of notes with mixed colors. (00043151)
- Improved the translation of the precision of dimension values. (00043151)
- Improved the accuracy and the translation speed when translating PMI as polylines.
- Enabled to translate the Capture of which the viewpoint is specified as "Automatic".
- Fixed an issue that the related elements of Datum Target were not translated correctly.
- Fixed a model-dependent issue that machining attributes were not translated correctly. (00044223)

(4) CATIA V5(Plug-in) ENF Reader

- Improved PMI translation
- Fixed an issue that the dimension with length zero was translated to a wrong value. (00037087)
- Fixed an issue that the position of the Leader line changed to a different position when updating it on CATIA V5. (00037087)
- Fixed an issue that show/hide status of geometrical set was not translated correctly when translating PMI as polylines. (00043151)
- Fixed an issue that it was not possible to switch show/hide of translated PMI which comes from hidden PMI when translated as polylines. (00043151)
- Fixed an issue that the position of the Dimension was not translated correctly. (00043151)
- Fixed an issue that the Linear Dimension was translated as Arc Length Dimension. (00043240)
- Enabled to translate GDT with multi related elements when using CATIA V5 R26 or later. (00044135, 00044322)
- Enhanced the translation of symbols.
- Fixed an issue that it failed to create the outer polyline of PMI which included

non-manifold polygons.

- Fixed an issue that Linear Dimension which had 4 cylinder faces as related elements was translated to Arc Length Dimension.

(5) NX(Plug-in) ENF Writer

- Improved PMI translation

- Enabled to translate the indicators of GDT.

- Fixed an issue that Notes without translation object texts were not translated to NX.

- Fixed a model-dependent issue that edges were lost in data translation. (00036004, 00036607)

- Fixed a model-dependent issue that the value of volume was not exported to the XML log file. (00044529)

- Fixed a model-dependent issue that it failed to insert seams. (00044732)

- Fixed a model-dependent issue that the geometry and component position were not translated correctly from the NX model which includes PromoteBody. (00046028)

(6) NX(Plug-in) ENF Reader

- Improved PMI translation

- Fixed an issue that the view direction of the layout was translated to trimetric every time. (00043672)

- Enabled to translate the indicators of GDT.

- Changed to treat as a translation error when the translation of the root PRT file failed. (00042285)

- Fixed an issue that it failed to translate a model which has a space at the beginning of the part name. (00042285)

- Fixed an issue that the show/hide status of layer in a part was not translated correctly when specifying a template file only for assembly. (00042437)

- Fixed a model-dependent issue that it failed to translate the geometry when specifying different templates for the assembly and the part. (00042437)

- Fixed a model-dependent issue that the geometry was lost in data translation. (00044283)

(7) Creo Parametric(Plug-in) ENF Writer

- Improved PMI translation

- Enabled to translate zone type sections managed in Combined States.

- Improved the translation of graphic PMI of GDT connected with Dimensions in Creo Parametric 4.0.

- Fixed a model-dependent translation error issue. (00042465, 00044243)

- Fixed an issue that the translation failed when specifying the input file which includes specific characters in the file path. (00047524)

(8) SOLIDWORKS ENF Writer

- Improved PMI translation

- Enabled to translate 3DView. (00042344)

- Changed to translate PMIs of hidden Annotation View. (00042344)

- Enabled to translate the unit system of GDT.

- Fixed an issue that "Tolerance Representation" of a special dimension was not translated correctly.

- Enabled to translate axes. (00036237)

- Fixed an issue that a model with assembly features was not translated correctly. (00043609)

(9) SOLIDWORKS ENF Reader

- Enabled to translate axes. (00036237)

- Changed to not create the attribute features named "ELY\_ATT\_UNQ\_INST\_NAME\_\*\*\*\*"

- Fixed an issue that the angular unit was always translated as a radian regardless of the angular unit specified in the template. (00046656)

(10) Inventor ENF Writer

- Changed to treat as a normal error instead of an extended error when it failed to translate a single part. (00042524)

(11) CADmeister(SA) ENF Writer

- Fixed an issue that it took a very long time to translate a model which included huge amounts of isolated edges. (00043554)

(12) CADmeister(SA) ENF Reader

- Fixed an issue that the renaming process toward the name of a coordinate system did not

work correctly. (AS6027)

(13) ACIS ENF Writer

- Fixed a model-dependent issue that it took very long to translate ACIS to ENF.

(14) STEP ENF Writer

- Fixed a model-dependent issue that parts were lost in data translation. (00037008, 00044141)

- Fixed an issue that an invalid ENF was exported when an invalid character code was set in the name of an instance.

- Changed to set the translation tolerance as 0.001mm instead of the original tolerance when the original tolerance defined in STEP file was less than 0.001mm.

- Added a new parameter "HealExternalFile" to specify whether to run auto healing on external files in STEP AP242 BOM XML to ENF translation.

(15) STEP ENF Reader

- Changed the exported format of an instance matrix.

(16) JT ENF Writer

- Improved PMI translation

- As for JT files exported from NX9 or older, the semantic information of Line Weld is saved as attribute information in JT. From EX8.1, it is enhanced to translate these JT attributes to semantic PMI information in ENF. (00037008)

- Enabled to translate Tabular Note PMI.

- Fixed a model-dependent issue that it failed to insert seams. (00044534)

- Fixed a model-dependent issue that edges were lost in data translation. (00044989)

(17) JT ENF Reader

- Improved PMI translation

- Enhance the visibility of PMI by identifying graphic information originating from text.

- Enhanced to translate the hatching pattern on the section plane.

- Enhanced to translate the attributes of surface finish according to the standard type.

(18) PLM XML ENF Writer

- Added a new parameter "HealExternalFile" to specify whether to run auto healing on external files.

(19) IGES ENF Writer

- Fixed a model-dependent issue that the geometry was not translated correctly. (00044902)

(20) 3D PDF ENF Reader

- Enhanced to translate the related elements of PMIs.

(21) CATIA V5(Plug-in) to NX(Plug-in)

- Enhanced to translate a deactivated instance in CATIA V5 to a suppressed instance in NX.

(22) CATIA V5(Plug-in) to Creo Parametric(Plug-in)

- Enhanced to translate a deactivated instance in CATIA V5 to a suppressed instance in Creo Parametric.

(23) CATIA V5(Plug-in) to SOLIDWORKS

- Enhanced to translate a deactivated instance in CATIA V5 to a suppressed instance in SOLIDWORKS.

(24) Auto Healing

- Changed to divide closed loops in auto healing when specifying Creo Parametric as the target CAD. (00042517)

- Fixed a model-dependent issue that an invalid ENF was exported by auto healing. (00043397, 00044489, 00044534)

(25) ASFALIS SmartLauncher

- Fixed an issue that specifying the folder by the file path on the file selection dialog in Windows 10 did not work. (00047613)

<sup>2</sup> Please refer to "ASFALIS\_Manual\_ENG.pdf" and the change logs at the bottom of "ASFALIS Parameter HTML" for specification changes on config file, parameters etc.

## 5. Bekannte Fehler

\*Added at EX8.1 in bold

(1) The character codes of the text log may be mixed in ASFALIS EX6.\* or later.

(2) The total value of mass properties may not be translated in CAD to ENF translation when Memory Saving Mode is enabled.

### **(3) CATIA V5(Plug-in) ENF Writer**

**Due to CATIA V5 API limitation, the face color may not be translated correctly. (on CATIA V5-6R2018 sp1 or later)**

(4) CATIA V5(Plug-in) ENF Reader 3D Annotation Option

A CAD API defect causes the following problems:

- The leader line for diameters can be translated as left and right reversed.
- Angular dimensions will not be translated. (on CATIA V5R23)

(5) NX I-deas ENF Writer

Due to the IDI API limitation, hidden entities of Coordinate System (CS) will be translated as visible entities.

(6) Creo Parametric(Plug-in) ENF Writer (Creo Parametric 2.0)

A CAD API defect causes the following problem:

- Hidden entities of quilt may be translated as visible entities.

This issue has been fixed in M030.

(7) Creo Parametric(Plug-in) ENF Writer/Reader

When the following option is written in the configuration files of Creo Parametric (config.sup or config.pro), ENF Writer/Reader may crash depending on model data. In the case of crash, specify the value "no" for this option,

show\_geom\_checks\_on\_creation yes

(8) Creo Parametric(Plug-in) ENF Writer/Reader (Creo Parametric 3.0)

The following issues have been found in Creo Parametric ENF Writer/Reader plugged in to Creo Parametric 3.0.

- When exporting neutral files with Creo Parametric ENF Writer plugged in to Creo Parametric 3.0

- There is a model-dependent issue that the instance color and the transparency may not be translated correctly.

- When importing neutral files with Creo Parametric ENF Reader plugged in to Creo Parametric 3.0

- There is an issue that the color and the transparency of the back side of faces are not translated correctly.

- There is an issue that the time for translation increases on 32bit OS only.

- There is an issue that the processing time for translating isolated curves will increase.

(It takes terribly long to translate a model with more than 10 thousand isolated curves)

(9) Creo Parametric(Plug-in) ENF Writer/Reader

It may fail to translate in Creo Parametric ENF Writer/Reader because of Creo Parametric crashing.

We confirmed that the error has occurred at 0.1 percent to 4 percent (one to 40 times out of one thousand times) depending on the environment in our test. (Now we are investigating the cause of the error.)

(10) NX( Plug-in) ENF Writer 3D Annotation Option

There is a restriction on the data translation of 3D annotation with NX ENF Writer

- The texts of "Hole Dimension" will not be translated when translating NX data from NX9.0 or later.

(11) NX( Plug-in) ENF Writer (NX 8.5)

A CAD API defect causes the following problem:

- NX8.5: Location of Leader arrow may be incorrect in polyline PMI.

This problem does not occur when translating using NX8.5.2 or later.

(12) NX( Plug-in) ENF Reader (NX9 or earlier)

When the model that has the part and sub-assembly including Drafting PMI is translated using NX9 or earlier Legacy adapters, there is an issue that the model may not be displayed when switching the Model View in NX.

(13) NX( Plug-in) ENF Writer/Reader (NX11)



There has been reported that NX11 to/from ENF translation fails with some graphic board versions. We have confirmed the following graphic boards which fails.

- NVIDIA Quadro P600, v23.21.13.8816 or later
- NVIDIA Quadro P620, v24.21.13.9793 / v24.21.14.1195
- NVIDIA Quadro K420, v23.21.13.9077

You may be able to avoid translation errors by reverting to the driver version below.

- NVIDIA Quadro P600, v21.21.13.7735
- NVIDIA Quadro K420, v23.21.13.8512

#### **(14) NX( Plug-in) ENF Writer/Reader**

**The translation of multi-plane section (e.g., two parallel-plane type and box type) is available only in NX11 or later.**

(15) SOL IDWORKS ENF Writer

The SOLIDWORKS API defect may cause a model-dependent issue that face colors are not translated correctly.

#### **(16) SOL IDWORKS ENF Reader**

**The SOLIDWORKS API defect may cause a translation error when the original SW model has many parts. The following environment variable settings may help to avoid the translation error.**

**ELY\_SW\_PREOPEN\_DOCUMENT=1**

**ELY\_CONFIG\_ELCFB\_ENABLE\_SERVER=1**

**ELY\_FBT\_FORCE\_PARALLEL\_PROCESSING=1**

**ELY\_CONFIG\_ELCFB\_SERVER\_RESTART\_COUNT=1000**

**ELY\_CONFIG\_ELCFB\_NUM\_OF\_PROCESSES=1**

(17) SOL IDWORKS ENF Writer/Reader

Please note that an error may occur when using SOLIDWORKS ENF Writer/Reader on the same computer at the same time. Please ensure that SOLIDWORKS adapters will not be used on the same computer at the same time when setting Slave Nodes.

(18) Auto desk Inventor ENF Reader

It may encounter an error when trying to save a data on a mounted folder on network.

(19) Auto desk Inventor ENF Reader

The part names such as Part1, Part2 and so on which are often used by default may get renamed to Part1U0, Part2U1 and so on at the translation depending on the environment.

(20) Auto desk Inventor ENF Reader

The memory consumption is higher when translating assembly models using Inventor 2017 compared to Inventor 2016 or earlier.

This is because a thumbnail is created at data import of e.g., ACIS files due to a restriction from CAD system side.

(21) STE P ENF Reader

When the STEP file of the assembly model translated by ASFALIS is opened by SOLIDWORKS 2009 or before, A defect in SOLIDWORKS causes the following problems.

- Step files will be read as empty assembly models.
- The assembly structure and matrix information will be lost and read as parts.

(22) JT E NF Writer 3D Annotation Option

There are restrictions on the data translation of 3D annotation with JT ENF Writer.

- Following properties of GDT are not supported
- Common Zone
- Maximum
- Unit Basis Value
- All over
- Third or later datum feature of Compound Datum
- Following property of surface finish is not supported
- Tolerance of Machining Allowance
- Special characters (such as super-/subscript) in PMI in NX data will be translated to standard characters in the translation of JT data exported from NX.

(23) JT E NF Reader

The defect of JT library causes the following problems:

- When an assembly or a part have multiple assemblies as its parent and are translated with the parameter FileFormat=1, assembly sharing will be canceled and the number of assembly or part instances will be increased.

- When a part has multiple different parent assemblies and is translated with the parameter FileFormat=2, part sharing will be canceled and the number of part instances will be increased.

These problems do not occur when using the parameter FileFormat=0.

**(24) 3D P DF ENF Reader**

**It is reported that the thumbnail image for each model view is incorrect in some cases.**

(25) 3D P DF Report

Please note that the number of elements for exclusive show is restricted to five at maximum to control the memory consumption when showing the validation result on the attributes on B-rep elements exclusively.

(26) 3D P DF Report

The display (highlight / exclusive show of selected elements) may not function correctly due to the restriction on the 3D PDF rendering.

(27) 3D P DF Report

Please note that there is an issue that Left/Right 3D Views are not synchronized to each other when manipulating a model with 3D mouse/Spaceball.

(28) 3D P DF Report

Please note that you may fail to open 3D PDF reports when the model contains many PMIs.

(As a reference, we failed when a model had more than 3,000 PMIs in our test.)

**(29) 3D P DF Report**

**When opening a 3D PDF attached to another PDF, save the 3D PDF report before opening. It is reported that directly opening the attached 3D PDF before saving does not work correctly.**

(30) HTML Report

Processing time as well as memory consumption will increase compared to EX7.1 when opening HTML validation report that contains many detected differences.

(For your reference, increased by 50 percent in our test)

**(31) HTML Report**

**The validation results of hatching patterns and caps of cross sections are displayed in 3D view only under the following condition.**

- **The cross section is defined only by a single plane.**

- **There is no interference between each solid**

(32) "Supplier Name" will not be applied to the file names of top files (PLM or JT files) when performing CATIA V5 to PLM XML or CATIA V5 to JT translation on ASFALIS Desktop Controller or ASFALIS TransServer with Daimler settings on.

## 6. Beschränkungen von „New Adapter“-Einstellung

(1) New adapters are supported for the following adapters.

- CATIA V5(Plug-in) ENF Reader
- NX(Plug-in) ENF Reader
- Creo Parametric(Plug-in) ENF Reader
- JT ENF Reader
- PLM XML ENF Writer/Reader
- STEP AP242 BOM XML ENF Writer/Reader
- SOLIDWORKS ENF Writer/Reader

New adapters other than the above are available but not supported.

(2) ENF Reader

Because of the overhead for parallelization, performance of the new adapter in terms of speed and memory usage may sometimes be worse than the legacy adapter, especially for small models.

(3) ENF Reader

Interval of progress update is rough compared to the legacy adapter.

(4) CATIA V5(Plug-in) ENF Reader

Parameters "InstancePathDisp" and "KeepNativeFilename" accept only values "0"/"1" not "Yes"/"No".

(5) CATIA V5(Plug-in) ENF Reader

When an assembly is imported as internal component, the order of instances may not be preserved.

## 7. Notizen

(1) CADmeister ENF Writer/Reader is supported on Japanese OS and locale only or on English OS.

(2) CATIA V5(Plug-in) ENF Reader

Please note that it may take long to translate using V5-6R2014 or later when the number of referenced objects of PMI is large. (AS4958)

(3) Restrictions on Windows 7

- "Windows XP Mode" is not supported.

(4) When you use CATIA V5(Plug-in) ENF Writer/Reader on Windows Vista and Windows 7, you need to add firewall exception for the following executable files. Please refer to the ASFALIS manual for the details.

- CATIA V5 ENF Writer: caa2enf.exe / caa2fbt.exe

- CATIA V5 ENF Reader: enf2caa.exe / fbt2caa.exe

(5) "Remove Invisible Part" and "Extract Visible Face" of Geometry Simplifier

If you wish to run the sub process "RemoveInvisiblePart" or "ExtractVisibleFaceRemove", it is recommended to use a machine with a video board which supports OpenGL Ver3.0 or later. The power of these functionalities will be equivalent as EX7.2 if you run these sub processes on a machine without the GPU.

(6) ASFALIS modules do not support the translation when you are logged off. You need to log in to

the machine when you execute the translation.

(7) For PDQ Checker, check tolerance could be referred by another check item.

(8) It has been reported that you may experience unsteadiness in the performance of SOLIDWORKS in the environment where Microsoft Update "KB3072630" is applied.

Please check whether your environment meets these conditions when SOLIDWORKS ENF Writer/Reader does not behave properly.

This issue is fixed in SOLIDWORKS 2016 PR1 and SOLIDWORKS 2015 SP5.0. Please refer to the following page on SOLIDWORKS website for the details of the behavior and workaround.

<https://www.solidworks.com/sw/support/TechKB3072630.htm>

(9) Regarding Visual C++ Runtime libraries

Visual C++ Libraries are required to run the ASFALIS components. Please install the libraries from the included installer (vcredist\_x86.exe/vcredist\_x64.exe) if your environment does not

have the Runtime libraries.

Included installer:

- Microsoft Visual C++ 2005 Service Pack 1 Redistributable Package MFC Security Update (KB2538242)

- Microsoft Visual C++ 2008 Service Pack 1 Redistributable Package MFC Security Update (KB2538243)

- Microsoft Visual C++ 2010 Service Pack 1 Redistributable Package MFC Security Update (KB2565063)

- Visual C++ Redistributable for Visual Studio 2012

- Visual C++ Redistributable for Visual Studio 2013

- Visual C++ Redistributable for Visual Studio 2015

(10) SOL IDWORKS ENF Writer: This does not support the translation of CAD models that are created in SOLIDWORKS 2017sp2 or later using 3D Interconnect functionality, and contain CAD data in third-party native format.

## 8. Systemvoraussetzungen

ASFALIS Adapter

März 2019

### ENF Writer / Reader / ENF Reader Option

CATIA V5		
Product Code	Product Name	Product ID
ASF-CAT5P-ENFS	CATIA V5 to ENF	117001
ASF-ENFS-CAT5P	ENF to CATIA V5	100171
ASF-ANN/CAT5	ENF to CATIA V5 3D Annotation Option	501171
ASF-ATR/CAT5	ENF to CATIA V5 Attribute Option	601171
File format	CAD license	Install Type
CATProduct CATPart	any one of the following: AL1, MD1, ME1, XM1, YM1, ADD, AL2, AM2, CV2, DIC, DP2, EF2, EI2, ER2, FS2, HD2, MD2, ME2, MO2, MS2, PL2, PM2, RE2, RM2, RP2, SBD, SD2, SO2, XM2, YM2, AB3, AL3, CD3, SL3, TA3  (3D Annotation) CATIA V5 to ENF : AB3 (SpotWeld) ENF to CATIA V5 : FTA	CAD Plug-in
Supported version / Supported OS (Legacy Adapter)		
R19 (SP6 or later) R20 (SP3 or later) R21 V5-6R2012 (R22)	Windows 7 (64bit) SP1	
V5-6R2013 (R23) V5-6R2014 (R24) V5-6R2015 (R25)	Windows 7 (64bit) SP1 Windows 8.1 (64bit)	
V5-6R2016 (R26) V5-6R2017 (R27) V5-6R2018 (R28)	Windows 7 (64bit) SP1 Windows 8.1 (64bit) Windows 10 (64bit)	
Supported version / Supported OS (New Adapter)		
R19 (SP6 or later) R20 (SP3 or later) R21 (SP2 or later) V5-6R2012 (R22)	Windows 7 (64bit) SP1	
V5-6R2013 (R23) V5-6R2014 (R24) V5-6R2015 (R25)	Windows 7 (64bit) SP1 Windows 8.1 (64bit)	

V5-6R2016 (R26) V5-6R2017 (R27) V5-6R2018 (R28)	Windows 7 (64bit) SP1 Windows 8.1 (64bit) Windows 10 (64bit)
---	--

CATIA V4		
Product Code	Product Name	Product ID
ASF-CAT4S-ENFS	CATIA V4 to ENF	106001
ASF-ENFS-CAT4S	ENF to CATIA V4	100061
File format	CAD license	Install Type
model	not required	Standalone
Supported version / Supported OS		
v4.2.1 - v4.2.5	Windows 7 Professional/Enterprise/Ultimate (64bit) SP1 Windows 8.1 (64bit) Windows 10 (64bit)	

NX I-deas		
Product Code	Product Name	Product ID
ASF-IDEP-ENFS	NX I-deas to ENF	103001
ASF-ENFS-IDEP	ENF to NX I-deas	100031
ASF-ANN/IDEAS	ENF to NX I-deas 3D Annotation Option	501031
ASF-ATR/IDEAS	ENF to NX I-deas Attribute Option	601031
File format	CAD license	Install Type
mf1, arc	solid_modeling features_modeling assemblies gateway  (3D Annotation) geometric_tol	CAD Plug-in
Supported version / Supported OS		
NX I-deas 6.3 NX I-deas 6.4 NX I-deas 6.5	Windows 7 Professional/Enterprise (64bit) SP1	
NX I-deas 6.6	Windows 7 Professional/Enterprise (64bit) SP1 Windows 10 (64bit)	
This application is available on Windows 7 (64bit)/Windows 10 (64bit) under WOW64.		

Creo Parametric		
Product Code	Product Name	Product ID

ASF-PROP-ENFS	Creo Parametric to ENF	104001
ASF-ENFS-PROP	ENF to Creo Parametric	100041
ASF-ATR/PROE	ENF to Creo Parametric Attribute Option	601041
<b>File format</b>	<b>CAD license</b>	<b>Install Type</b>
prt, asm	Creo Parametric	CAD Plug-in
<b>Supported version / Supported OS (Legacy Adapter)</b>		
Creo Parametric 2.0 Creo Parametric 3.0 Creo Parametric 4.0 Creo Parametric 5.0	Windows 7 Professional/Enterprise/Ultimate (64bit) SP1 Windows 8.1/Windows 8.1 Pro (64bit) (Creo Parametric 2.0 M100 or later) Windows 10 (64bit)(Creo Parametric 2.0 M190 or later, Creo Parametric 3.0 M060 or later)	
<b>Supported version / Supported OS (New Adapter)</b>		
Creo Parametric 2.0 Creo Parametric 3.0 Creo Parametric 4.0 Creo Parametric 5.0	Windows 7 Professional/Enterprise/Ultimate (64bit) SP1 Windows 8.1/Windows 8.1 Pro (64bit) (Creo Parametric 2.0 M100 or later) Windows 10 (64bit)(Creo Parametric 2.0 M190 or later, Creo Parametric 3.0 M060 or later)	

<b>Parasolid</b>		
<b>Product Code</b>	<b>Product Name</b>	<b>Product ID</b>
ASF-PARS-ENFS	Parasolid to ENF	105001
ASF-ENFS-PARS	ENF to Parasolid	100051
<b>File format</b>	<b>CAD license</b>	<b>Install Type</b>
x_t, x_b, xmt_txt, xmt_bin	not required	Standalone
<b>Supported version / Supported OS</b>		
v7 - v31.0	Windows 7 (64bit) SP1 Windows 8.1/Windows 8.1 Pro (64bit) Windows 10 (64bit)	

<b>NX</b>		
<b>Product Code</b>	<b>Product Name</b>	<b>Product ID</b>
ASF-UGP-ENFS	NX to ENF	114001
ASF-ENFS-UGP	ENF to NX	100141
ASF-ANN/UG	ENF to NX 3D Annotation Option	501141
ASF-ATR/UG	ENF to NX Attribute Option	601141
<b>File format</b>	<b>CAD license</b>	<b>Install Type</b>

prt	gateway solid_modeling assemblies features_modeling  (3D Annotation) drafting (drafting) geometric_tol (Note/GDT) cam_base (hatching) ug_smart_models (SurfaceFinish)	CAD Plug-in
-----	--	-------------

**Supported version / Supported OS (Legacy Adapter)**

NX8.5 NX9.0	Windows 7 Professional/Enterprise (64bit) SP1 Windows 8.1 (64bit) (NX 8.5.2 or later)
NX10.0	Windows 7 Professional/Enterprise (64bit) SP1 Windows 8.1 (64bit) Windows 10 (64bit) (NX10.0.3 or later)
NX11.0	Windows 7 Professional/Enterprise (64bit) SP1 Windows 8.1 (64bit) Windows 10 (64bit)
NX12.0	Windows 10 (64bit)

**Supported version / Supported OS (New Adapter)**

NX8.5 NX9.0	Windows 7 Professional/Enterprise (64bit) SP1 Windows 8.1 (64bit)
NX10.0	Windows 7 Professional/Enterprise (64bit) SP1 Windows 8.1 (64bit) Windows 10 (64bit) (NX10.0.3 or later)
NX11.0	Windows 7 Professional/Enterprise (64bit) SP1 Windows 8.1 (64bit) Windows 10 (64bit)
NX12.0	Windows 10 (64bit)

**SOLIDWORKS**

Product Code	Product Name	Product ID
ASF-SWP-ENFS	SOLIDWORKS to ENF	109001
ASF-ENFS-SWP	ENF to SOLIDWORKS	100091



ASF-ATR/SW	ENF to SOLIDWORKS Attribute Option	601091
<b>File format</b>	<b>CAD license</b>	<b>Install Type</b>
sldasm, sldprt	SOLIDWORKS (3D View) MBD	CAD Plug-in
<b>Supported version / Supported OS (Legacy Adapter)</b>		
SOLIDWORKS 2012 SOLIDWORKS 2013	Windows 7 Professional/Enterprise/Ultimate (64bit) SP1	
SOLIDWORKS 2014	Windows 7 Professional/Enterprise/Ultimate (64bit) SP1 Windows 8.1 (64bit) (SOLIDWORKS 2014sp1 or later)	
SOLIDWORKS 2015	Windows 7 Professional/Enterprise/Ultimate (64bit) SP1 Windows 8.1 (64bit) Windows 10 (64bit) (SOLIDWORKS 2015sp5 or later)	
SOLIDWORKS 2016 SOLIDWORKS 2017 SOLIDWORKS 2018	Windows 7 Professional/Enterprise/Ultimate (64bit) SP1 Windows 8.1 (64bit) Windows 10 (64bit)	
SolidWorks 2019	Windows 7 Professional/Enterprise/Ultimate (64bit) SP1 Windows 10 (64bit)	
<b>Supported version / Supported OS (New Adapter)</b>		
SOLIDWORKS 2012 SOLIDWORKS 2013	Windows 7 Professional/Enterprise/Ultimate (64bit) SP1	
SOLIDWORKS 2014	Windows 7 Professional/Enterprise/Ultimate (64bit) SP1 Windows 8.1 (64bit) (SOLIDWORKS 2014sp1 or later)	
SOLIDWORKS 2015	Windows 7 Professional/Enterprise/Ultimate (64bit) SP1 Windows 8.1 (64bit) Windows 10 (64bit) (SOLIDWORKS 2015sp5 or later)	
SOLIDWORKS 2016 SOLIDWORKS 2017 SOLIDWORKS 2018	Windows 7 Professional/Enterprise/Ultimate (64bit) SP1 Windows 8.1 (64bit) Windows 10 (64bit)	
SolidWorks 2019	Windows 7 Professional/Enterprise/Ultimate (64bit) SP1 Windows 10 (64bit)	

<b>Autodesk Inventor</b>		
<b>Product Code</b>	<b>Product Name</b>	<b>Product ID</b>

ASF-AIP-ENFS	Inventor to ENF	142001
ASF-ENFS-AIP	ENF to Inventor	100421
ASF-ATR/AI	ENF to Inventor Attribute Option	601421
<b>File format</b>	<b>CAD license</b>	<b>Install Type</b>
iam, ipt	Inventor	CAD Plug-in
<b>Supported version / Supported OS (Legacy Adapter)</b>		
Inventor 2015 Inventor 2016	Windows 7 Professional/Enterprise/Ultimate (64bit) Windows 8.1 (64bit)	
Inventor 2017 Inventor 2018 Inventor 2019	Windows 7 Professional/Enterprise/Ultimate (64bit) Windows 8.1 (64bit) Windows 10 (64bit)	
<b>Supported version / Supported OS (New Adapter)</b>		
Inventor 2015 Inventor 2016	Windows 7 Professional/Enterprise/Ultimate (64bit) Windows 8.1 (64bit)	
Inventor 2017 Inventor 2018 Inventor 2019	Windows 7 Professional/Enterprise/Ultimate (64bit) Windows 8.1 (64bit) Windows 10 (64bit)	

<b>Creo Elements/Direct Modeling</b>		
<b>Product Code</b>	<b>Product Name</b>	<b>Product ID</b>
ASF-OSDP-ENFS	Creo Elements/Direct Modeling to ENF	112001
ASF-ENFS-OSDP	ENF to Creo Elements/Direct Modeling	100121
<b>File format</b>	<b>CAD license</b>	<b>Install Type</b>
Creo Elements/Direct to ENF: pkg, sda, sdp, sd ENF to Creo Elements/Direct: pkg	Creo Elements/Direct Modeling	CAD Plug-in
<b>Supported version / Supported OS</b>		
Creo Elements/Direct Modeling 17.0	Windows 7 Professional/Enterprise/Ultimate (64bit)	
Creo Elements/Direct Modeling 18.1 Creo Elements/Direct Modeling 19.0	Windows 7 Professional/Enterprise/Ultimate (64bit) SP1 Windows 8.1/Windows 8.1 Pro/Windows 8.1 Enterprise (64bit) (18.1 M060 or later) Windows 10 (64bit) (18.1 M090 or later) (19.0 M040 or later)	
Creo Elements/Direct Modeling 20.0 Creo Elements/Direct Modeling 20.1	Windows 7 Professional/Enterprise/Ultimate (64bit) SP1 Windows 8.1/Windows 8.1 Pro/Windows 8.1 Enterprise (64bit) Windows 10 (64bit)	

IGES		
Product Code	Product Name	Product ID
ASF-IGESS-ENFS	IGES to ENF	199001
ASF-ENFS-IGESS	ENF to IGES	100991
File format	CAD license	Install Type
igs, iges	not required	Standalone
Supported version / Supported OS		
5.2, 5.3	Windows 7 Professional/Enterprise/Ultimate (64bit) Windows 8.1 (64bit) Windows 10 (64bit)	

STEP		
Product Code	Product Name	Product ID
ASF-STEPS-ENFS	STEP to ENF	198001
ASF-ENFS-STEPS	ENF to STEP	100981
ASF-ANN/STEP	ENF to STEP 3D Annotation Option	501981
ASF-ATR/STEP	ENF to STEP Attribute Option	601981
File format	CAD license	Install Type
step, stp, stpZ	not required	Standalone
Supported version / Supported OS		
AP203, AP214, AP242	Windows 7 (64bit) Windows 8.1 (64bit) Windows 10 (64bit)	

STEP AP242 BOM		
Product Code	Product Name	Product ID
ASF-STEPS-ENFS	STEP AP242 BOM to ENF	175001
ASF-ENFS-STEPS	ENF to STEP AP242 BOM	100751
ASF-ATR/STEP	ENF to STEP AP242 BOM Attribute Option	601981
File format	CAD license	Install Type
stpx, stpxZ	not required	Standalone
Supported version / Supported OS		
AP242 IS(edition1) AP242 TC(edition2)	Windows 7 (64bit) Windows 8.1 (64bit) Windows 10 (64bit)	

ACIS		
Product Code	Product Name	Product ID
ASF-ACISS-ENFS	ACIS to ENF	102001
ASF-ENFS-ACISS	ENF to ACIS	100021

File format	CAD license	Install Type
Sat, Sab	not required	Standalone
Supported version / Supported OS		
R6 - R28	Windows 7 (64bit) Windows 8.1 (64bit) Windows 10 (64bit)	

JT		
Product Code	Product Name	Product ID
ASF-JTS-ENFS	JT to ENF	184001
ASF-ENFS-JTS	ENF to JT	100841
ASF-ANN/JT	ENF to JT 3D Annotation Option	501841
ASF-ATR/JT	ENF to JT Attribute Option	601841
File format	CAD license	Install Type
jt	not required	Standalone
Supported version / Supported OS (Legacy Adapter)		
JT to ENF: 6.4 - 10.2 ENF to JT: 8.0 - 10.2	Windows 7 Professional/Enterprise/Ultimate (64bit) Windows 8.1 (64bit) Windows 10 (64bit)	
Supported version / Supported OS (New Adapter)		
JT to ENF: 6.4 - 10.2 ENF to JT: 8.0 - 10.2	Windows 7 Professional/Enterprise/Ultimate (64bit) Windows 8.1 (64bit) Windows 10 (64bit)	

PLM XML		
Product Code	Product Name	Product ID
ASF-PLMXMLS-ENFS	PLM XML to ENF	194001
ASF-ENFS-PLMXMLS	ENF to PLM XML	100941
ASF-ATR/PLMXML	ENF to PLM XML Attribute Option	601941
File format	CAD license	Install Type
plmxml	not required	Standalone
Supported version / Supported OS		
-	Windows 7 Professional/Enterprise/Ultimate (64bit) Windows 8.1 (64bit) Windows 10 (64bit)	

iCAD		
Product Code	Product Name	Product ID
ASF-ICADS-ENFS	iCAD to ENF	149001
ASF-ENFS-ICADS	ENF to iCAD	100491

File format	CAD license	Install Type
icd	not required	Standalone
<b>Supported version / Supported OS</b>		
iCAD/SX V7L1, V7L2, V7L3 V7L4, V7L5, V7L6	Windows 7 (64bit) SP1 Windows 8.1 (64bit) Windows 10 (64bit)	

<b>CADmeister (stand alone)</b>		
Product Code	Product Name	Product ID
ASF-CDMS-ENFS	CADmeister to ENF (stand alone)	167001
ASF-ENFS-CDMS	ENF to CADmeister (stand alone)	100671
ASF-ANN/CDM	ENF to CADmeister (stand alone) 3D Annotation Option	501671
ASF-ATR/CDM	ENF to CADmeister (stand alone) Attribute Option	601671
File format	CAD license	Install Type
cfio	not required	Standalone
<b>Supported version / Supported OS</b>		
CADmeister Ver4.0 - 12.0	Windows 7 (64bit) SP1 Windows 8.1 (64bit) Windows 10 (64bit) CADmeister (stand alone) Adapter is supported on Japanese OS and locale, or English OS.	

<b>CATIA V5 (stand alone)</b>		
Product Code	Product Name	Product ID
ASF-CAT5S-ENFS	CATIA V5 to ENF (stand alone)	170001
ASF-ENFS-CAT5S	ENF to CATIA V5 (stand alone)	100701
File format	CAD license	Install Type
CATProduct, CATPart	not required	Standalone
<b>Supported version / Supported OS</b>		
CATIA V5 to ENF: R7 - R28 ENF to CATIA V5: R14, R19, R20	Windows 7 (64bit) Windows 8.1 (64bit) Windows 10 (64bit)	

<b>Creo Parametric (stand alone)</b>		
Product Code	Product Name	Product ID
ASF-PROS-ENFS	Creo Parametric to ENF (stand alone)	171001
File format	CAD license	Install Type
prt, asm	not required	Standalone
<b>Supported version / Supported OS</b>		

2000i - WF5, Creo Parametric 1.0-5.0	Windows 7 (64bit) Windows 8.1 (64bit) Windows 10 (64bit)
---	--

NX (stand alone)		
Product Code	Product Name	Product ID
ASF-UGS-ENFS	NX to ENF (stand alone)	172001
File format	CAD license	Install Type
prt	not required	Standalone
Supported version / Supported OS		
UG10 - NX12	Windows 7 (64bit) Windows 8.1 (64bit) Windows 10 (64bit)	

STL		
Product Code	Product Name	Product ID
ASF-ENFS-STLS	ENF to STL	100811
File format	CAD license	Install Type
stl	not required	Standalone
Supported version / Supported OS		
-	Windows 7 (64bit) Windows 8.1 (64bit) Windows 10 (64bit)	

XVL		
Product Code	Product Name	Product ID
ASF-ENFS-XVLS	ENF to XVL	100301
File format	CAD license	Install Type
xv3, xv2, xv0	not required	Standalone
Supported version / Supported OS		
P-XVL(V3) V-XVL(V5, V7, V9) U-XVL(V10, V11)	Windows 7 (64bit) SP1 Windows 8.1 (64bit) Windows 10 (64bit)	

3D PDF		
Product Code	Product Name	Product ID
ASF-ENFS-3DPDFS	ENF to 3D PDF	100761
ASF-BAT/PDFE2	3D PDF Editor	10102-3119

File format	CAD license	Install Type
pdf	not required	Standalone
Supported version / Supported OS		
Adobe Acrobat Reader DC	Windows 7 (64bit) SP1 Windows 8.1 (64bit) Windows 10 (64bit)	
Note		
<p>* Please note that "ENF to 3D PDF" is a license on data translation to 3D PDF format and 3D PDF reporting (reports will be exported in default format), and it will require an additional license on "3D PDF Editor" to customize the format of output 3D PDF files.</p> <p>* This Component is tested using following. Basically, output 3D PDF files can be opened with other versions, too, but please note that there may be unexpected errors when using other versions. - Adobe Acrobat Reader DC Continuous (2019.010.20069)</p> <p>Data Package Studio(DPS) is an independent package; however, DPS is included in 3D PDF Editor as a product. If you own 3D PDF Editor, then you will be able use DPS. The following software or version is necessary when using DPS.</p>		
Data Package Studio (Supported Products / Supported versions)		
Package(permanent license) Adobe Acrobat Pro 2017 Adobe Acrobat Pro DC (Classic) Subscription Adobe Acrobat Pro DC	Continuous Release 2017 Release(Classic) 2015 Release(Classic)	

### ASFALIS Optimizer Batch component

Product Code	Product Name	Product ID
ASF-BAT/PDQ	PDQ Checker	10101
ASF-BAT/SIM	Geometry Simplifier	10102-3101
ASF-BAT/GVF	CAD Validator	10102-3105
ASF-BAT/ATR	Attribute Editor	10102-3107
ASF-BAT/ASM	Assembly Editor	10102-3106
ASF-BAT/ITR	Interference Checker	10102-3108
ASF-BAT/POP	Polygon Optimizer	10102-3113
ASF-BAT/EE	ENF Editor	10102-3115
File format	Supported OS	
ENF	Windows 7 Professional/Enterprise/Ultimate (64bit) Windows 8.1 (64bit) Windows 10 (64bit)(except for Attribute Editor, Assembly Editor)	

---

**Note**

Below are the prerequisite to utilize validation report (HTML / 3D PDF) functionality.  
Please ensure that your environment satisfies necessary items. (Contact Elysium or its authorized resellers to try and confirm before the purchase.)

**\* 3D PDF Report**

- Additional license on "ASFALIS ENF to 3D PDF" option to export validation result report in 3D PDF format
- Additional license on "ASFALIS Optimizer 3D PDF Editor" option to customize the 3D PDF report
- Adobe Acrobat Reader DC or later to view 3D PDF reports

**\* HTML Report**

- Internet Explorer 11 to view HTML report

**Etc**

<b>Product Code</b>	<b>Product Name</b>	<b>Product ID</b>
ASF-HEAL/CADCEUS	Healer for CADCEUS	100211
ASF-HEAL/TOGO	Healer for TOGO	100231
-	ENFPolygon	-
<b>File format</b>	<b>Supported OS</b>	
ENF	Windows 7 Professional/Enterprise/Ultimate (64bit) Windows 8.1 (64bit) Windows 10 (64bit)	



**HILFE**

Im Rahmen Ihres Wartungsvertrages stehen wir Ihnen gerne bei der Implementierung der neuen Version zur Verfügung.

**CAMTEX Support +49 (3681) 779-200**

[support@camtex.de](mailto:support@camtex.de)

Wir wünschen Ihnen viel Erfolg bei der Arbeit mit ASFALIS.

Ihr CAMTEX Team

CAMTEX GmbH  
Silbergrund 17  
D-98528 SUHL

[www.camtex.de](http://www.camtex.de)

[support@camtex.de](mailto:support@camtex.de)

Phone: +49 3681 779-200

Fax: +49 3681 779-210